

PRO X FADE

ADVANCED CROSSFADER TECHNOLOGY

Contents

- 1 EB Pro X Fade with relevant wiring loom attached
- 1 EB Pro X Fade knob
- 1 Fader mounting plate and screw set - 2 pieces
- 1 CAIG DeoxIT™ Cleaning Lube
- 1 Cleaning and Adjustment Tool set
- 2 Cleaning Pads - 1 Pad located inside stem of Cleaning Tool
- 1 Spare Grub-screw located inside top of Torque Adjustment Tool
- Warranty Information
- Instructions

Safety

Before using this unit be sure to read all items of the operation and installation instructions and these safety suggestions carefully and afterwards keep them to hand for future reference.

- 1 Avoid operating or installing this device in places where there is water, humidity, and excessive dust.
- 2 Do not allow water or any foreign object to get inside this unit.
- 3 Do not attempt to put your hands or any part of your body inside a live DJ mixer, should you wish to retrieve any lost parts, please turn the power off.

You are cautioned that any changes or modifications not expressed or approved in this instruction leaflet could void your authority to operate this equipment and invalidate your warranty.

Preparation and Installation

To install, clean and adjust we suggest you use the tools recommended by your mixer manufacturer. We also recommend that you do not make adjustments or clean the fader with your mixer powered up.

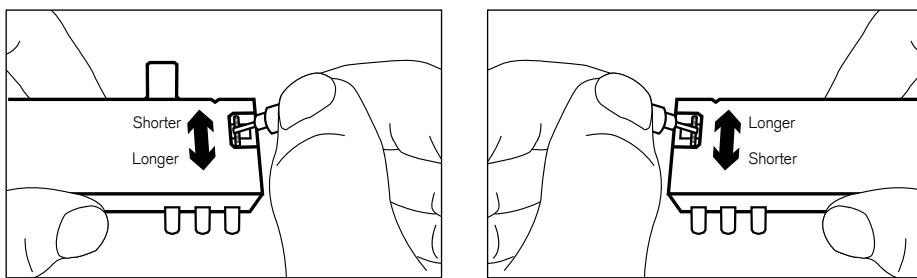
- 1 Check with your mixer manufacturer about how to remove your current crossfader and do so.
- 2 Attach the fader mounting plate to the Pro X Fade using the screws provided. Please check that the fader and mounting plate are compatible with your mixer first.
- 3 Users wishing to achieve an instant slick effect from the fader are advised to clean with the supplied CAIG DeoxIT™ before use.
- 4 Users wishing to make adjustments to the Pro X Fade should consult the adjustments and cleaning section.
- 5 Attach the Pro X Fade wiring loom to your mixer's wiring loom.
- 6 To fit the Pro X Fade simply mount it in your mixer using the screws provided with your mixer, with the EB label pointing downwards/towards you - N.B. some mixer users may have to mount the fader with the 6 label pointing away from you, please visit the website at <http://www.electicbreaks.com/proxfade> for further information.
- 7 Reattach mixer parts according to your manufacturer's guide.
- 8 Attach the Pro X Fade knob.

Cleaning and Adjustment Instructions

For further and video instructions for all the following information please visit our website at <http://www.electicbreaks.com/proxfade>

Lag Time Adjust

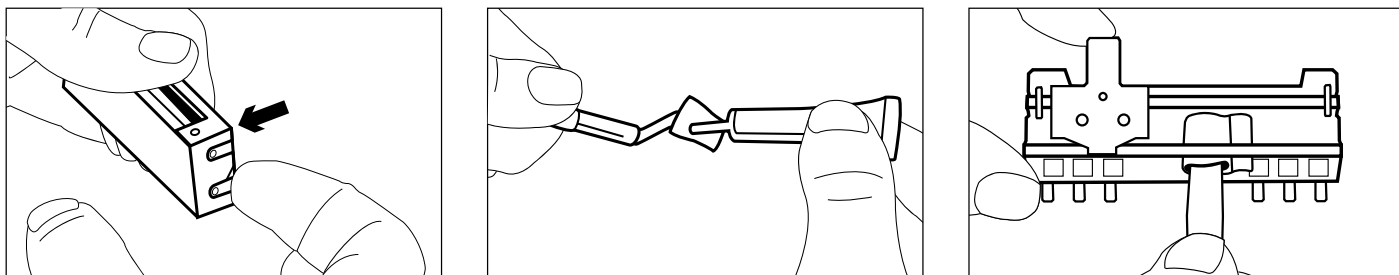
This will adjust the cut in time from the fader off position to fader on (silent to sound on) n.b. you can still use your mixer's crossfader curve control as usual. You should not make any adjustments with your mixer power switched on.



Using the screwdriver part of the adjustment tool, turn the rotaries in the directions shown to adjust the lag time.

Cleaning and Lubrication

Cleaning is only necessary if you're having any sound problems or stiffness in the fader - although the fader contacts contain no carbon elements you may still find that debris will build up inside the fader over time. Note that the Pro X Fade has easy access for cleaning and lubrication.

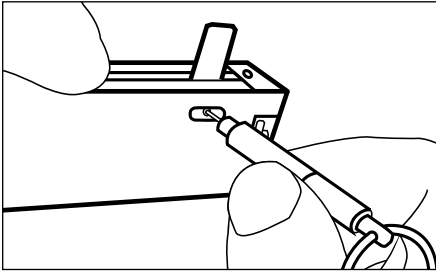


- 1 Open the Pro X Fade by removing the dust cover.
- 2 Attach the fabric cleaning pad to the cleaning tool.
- 3 Add a small amount of CAIG DeoxIT™ to the contact strips or rails and clean as necessary.

To lubricate the fader simply add a small amount of CAIG DeoxIT™ to the top rail and move the fader end-to-end as required to spread the lubrication - N.B. The rails must be cleaned before lubrication.

Torque Adjustment

You can adjust the stiffness of the fader using the Hex key part of the adjustment tool. Simply turn the grub screw located in the fader stem as shown.



Please adjust with caution as the grub screw can be lost if unscrewed too far. (However a replacement can be found inside the top of the Torque Adjustment Tool.)

Troubleshooting

The fader will not cut the sound out at all

Check that the lag time adjustments are not set too short and that your mixer is compatible, also check that the wiring loom is fully attached to your mixer's wiring loom. Check that you are using the correct screws to attach the fader to the fader mounting plate, if they are too long it will block the path of the fader stem section. Make sure the fader is securely mounted into your mixer. For compatibility information visit the website at <http://www.eclecticbreakss.com/proxfade>

The fader seems to be cutting the wrong way around

Ensure that the fader is installed correctly by installing the fader in the reverse direction.

The fader does not cut sharply even with the curve control set to minimum

Ensure that the Pro X Fade is compatible with your mixer by visiting the website at <http://www.eclecticbreakss.com/proxfade>

The fader feels stiff

Please refer to the Cleaning and Adjustments section.

The fader feels loose in the mixer

Make sure your fader is securely fastened to the fader mounting plate and that it is securely mounted into your mixer.

Disclaimer

Although the Pro X Fade has many adjustable features we do not recommend that you over-maintain the fader once you have found your preferred settings as it may affect the life of the fader. You are cautioned that any changes or modifications not expressed or approved in this instruction leaflet could void your authority to operate this equipment and invalidate your warranty.